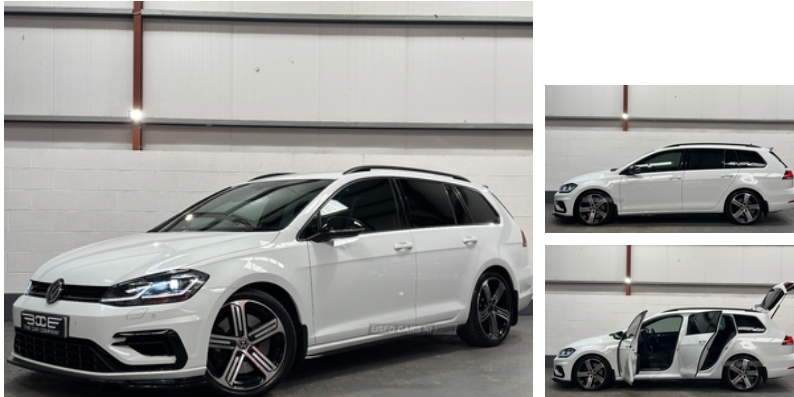


## Volkswagen Golf 2.0 TSI 310 R 5dr 4MOTION DSG | May 2017

**POA**

**SOLD (SIMILAR STOCK REQUIRED) CONTACT OUR OFFICE  
02890448540**



Volkswagen Golf R 2.0 TSI 310BHP 4 Motion (Facelift)

55,900 Miles

Full Volkswagen Service History & VW Specialist Service History  
Including Updates Online

DSG Gearbox

X2 Keys

MOT Sept 2024

No Performance Modifications, Exterior Front Rieger Spoiler,  
Fitted Mud Flaps

Impeccable Condition Throughout, Bridgestone Potenza Tyres  
Recently Fitted, Previously Sold By Ourselves.

2017 Facelift Edition, 7.5 310 BHP Model, Virtual Cockpit, Heated  
Front Seats, Touch Screen Entertainment, DSG, Interior Ambient  
Lighting Pack, SAT-NAV, DAB Digital Radio, LED Daytime  
Running Lights, Adaptive Xenon Lights, Factory Rear Privacy  
Glass, Roof Rails, Standard Gloss Black Lower Lip Spoilers,  
Chrome Exhaust Tips, Paddle Shift, Blue-Tooth, Parking Sensors,  
Park Assist, Variable Driving Modes.

Indoor Showroom Viewing / Part Exchange Welcome / Finance  
Available

X1 Finance HP Example

£5,000 Deposit = £389 PM

NO Final Payment, No Early Settlement Fines

No Mileage Restrictions

Existing Finance Settled, Multiple PCP & Finance Options  
Available,

please contact for a bespoke quote.

Finance supplied by Close Brothers Motor Finance

Extended Warranty Packages Available, 12, 24, 36 Months,  
including Road-Side Assistance as standard.

For anymore information contact The Car Company on 028  
90448540 / 07875553938

**Miles:** 55000

**Fuel Type:** Petrol

**Transmission:** Semi-Automatic

**Colour:** White

**Engine Size:** 1984

**CO2 Emission:** 164

**Tax Band:**  
Petrol/Diesel (£190 p/a)

**Body Style:** Estate

**Insurance group:** 39E

**Reg:** HZ373

### Technical Specs

#### DIMENSIONS

**Length:** 4567mm

**Width:** 1799mm

**Height:** 1515mm

**Seats:** 5

**Luggage Capacity (Seats  
Up):** 605L

**Gross Weight:** 2110KG

**Max. Loading Weight:** 592KG

#### PERFORMANCE & ECONOMY

**Fuel Consum. (Urban  
Cold):** 31.7MPG

**Fuel Consum. (Extra  
Urban):** 45.6MPG

**Fuel Consum.  
(Combined):** 39.2MPG

**Fuel Tank Capacity:** 50L

**Number Of Gears:** 7 SPEED

**Top Speed:** 155MPH

**Acceleration 0-100 km/h:** 4.8s

**Engine Power BHP:** 305.8BHP

## Vehicle Features

'Lights On' warning buzzer, 3 point height adj front seatbelts + pretensioners, 3 rear 3 point seatbelts, 3 rear headrests, 3 spoke steering wheel, 8" touch screen, 12V socket in luggage compartment, 60/40 split folding rear seat, ABS, Adaptive Cruise Control with pedestrian detection and speed limiter, Air conditioning - 2 zone electronic climate control, Alarm with interior protection, Ambient lighting pack - Golf, Anti-tramp function, Auto dimming rear view mirror, Automatic coming/leaving home lighting function, Automatic headlights, Automatic post collision braking, aux-in, Bag hook in luggage compartment, Black brake calipers, Black headlining, Black rear diffuser, Bluetooth hands free telephone connection, Body colour door handles, Body colour rear roof spoiler, Body colour sports bumpers, Boot lashing points, Brake pad wear indicator warning light, Car-Net App-Connect, Carbon touch decorative inserts, CD/MP3/WMA, Child locks on rear doors, Chrome-plated light switch surround, Chrome pedals, Composition media system, Cooled glovebox, Courtesy light delay, Cover for storage compartment in centre, DAB Digital radio, Drive mode selector, Driver/Front Passenger airbags, Driver/Passenger whiplash optimised head restraints, Driver alert system, Driver profile selection, Drivers knee airbag, Dust/pollen filter, Electrically adjustable and heated door mirrors, Electric front windows, Electric rear windows, Electronic engine immobiliser, Electronic parking brake with auto hold, ESP with EDL + ASR, Exterior temperature gauge, Front + rear carpet mats, Front and rear curtain airbags, Front assist including city emergency braking, Front centre armrest with storage box and rear air vents, Front passenger airbag deactivation, Front passenger drawer stowage, Front passenger seat height adjust, Front seat back storage pockets, Front side airbags, Gearshift paddles, Grab handles, Heated rear windscreen, Heat insulated tinted glass 65% light absorbing from B pillar back, Height/reach adjust steering wheel, height adjustable and removable, Height adjustable driver's seat, Honeycomb radiator grille - black, Illuminated door sills, Illuminated vanity mirrors, Instrument cluster in white, Isofix preparation for 2 rear child seats, LED daytime running lights, LED rear lights, Limited slip differential, Load through provision with rear centre armrest and cupholders x2, Lowered sports suspension, Luggage compartment cover, Luggage compartment lighting, Mirror pack - Golf, Multifunction computer, Multifunction leather steering wheel with grey stitching leather trimmed gear knob including paddle shift, Overhead storage box, Piano black centre console, Pre crash system, Progressive power assisted steering, Rain sensor, Rear windscreen washer and wiper with interval delay, Remote central locking with 2 remote folding keys, Rev counter, Silver roof rails, Space saver spare wheel, Storage compartments in doors, Sun visors, Trip and service interval display, Tyre pressure monitor, Ultrasonic front and rear optical and audible parking sensors, USB and SD card reader, Variable boot floor, Warning buzzer and light for front seatbelts unfastened

